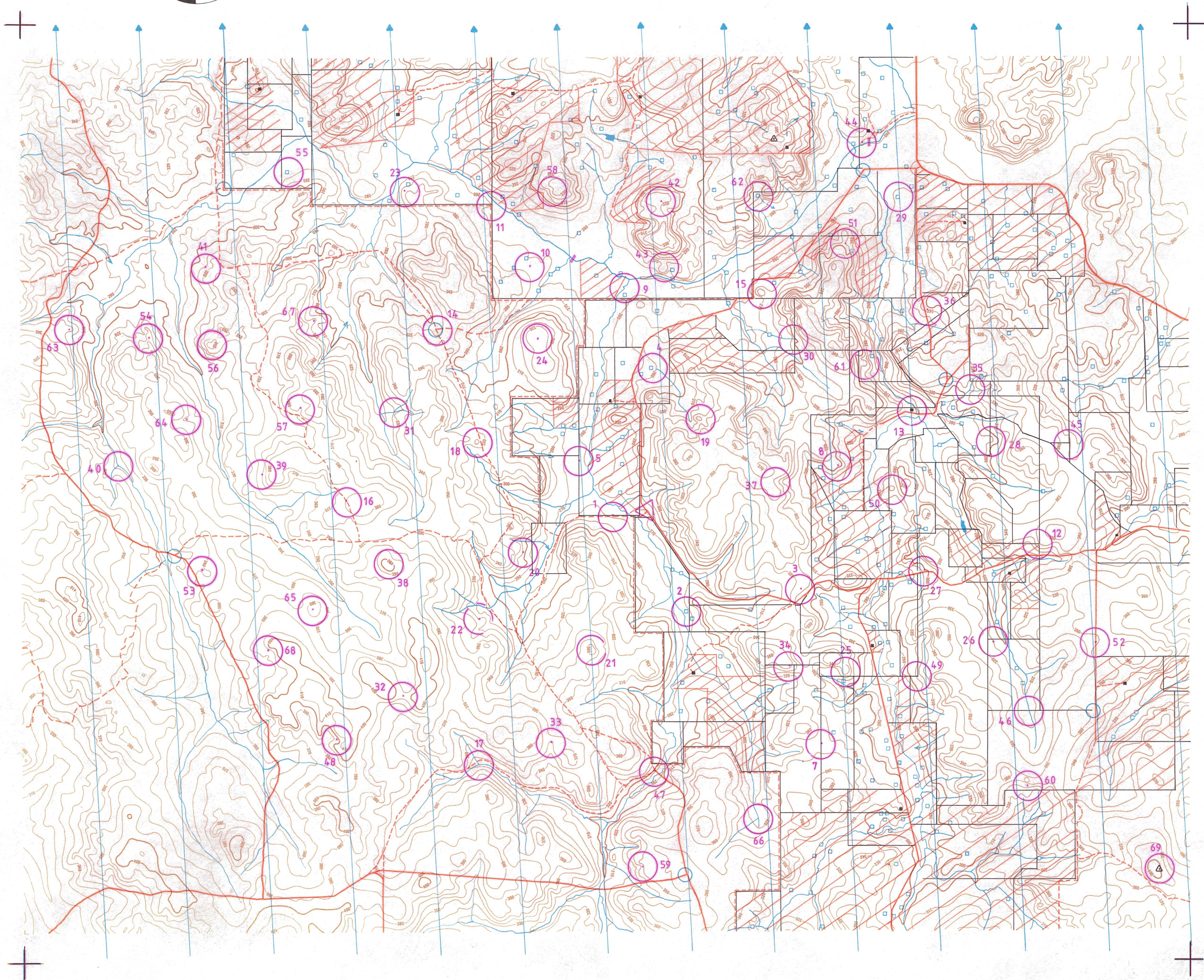


WESTERN AUSTRALIAN ROGAINING ASSOCIATION

DALE ROGAINING MAP



SCALE 1:50,000



(14/15 July 1984)

- | | | | | | | | |
|--|------------|--|----------------------|--|---------------|--|-------------------|
| | control | | magnetic north lines | | sealed road | | property boundary |
| | hash house | | creek | | gravel road | | trig station |
| | bridge | | dam | | track | | house |
| | | | water cans | | out of bounds | | |

Topographic base supplied by and reproduced with permission of the Department of Lands and Surveys

This map was produced with financial assistance from the Department for Youth Sport and Recreation

cartography : Nick Dytlewski 1984

